



 **CIPUTRA WORLD 2**
JAKARTA

Located in the Emerging Shopping, Financial & Art Distric
JL. PROF. DR. SATRIO





CIPUTRA WORLD 2
JAKARTA

Land Size 4,6 Ha

80,000sqm Office Space

349 The Orchard Apartment's

117 The Residence Apartment's

210 Five Stars Serviced Apartment

W Hotel Jakarta*

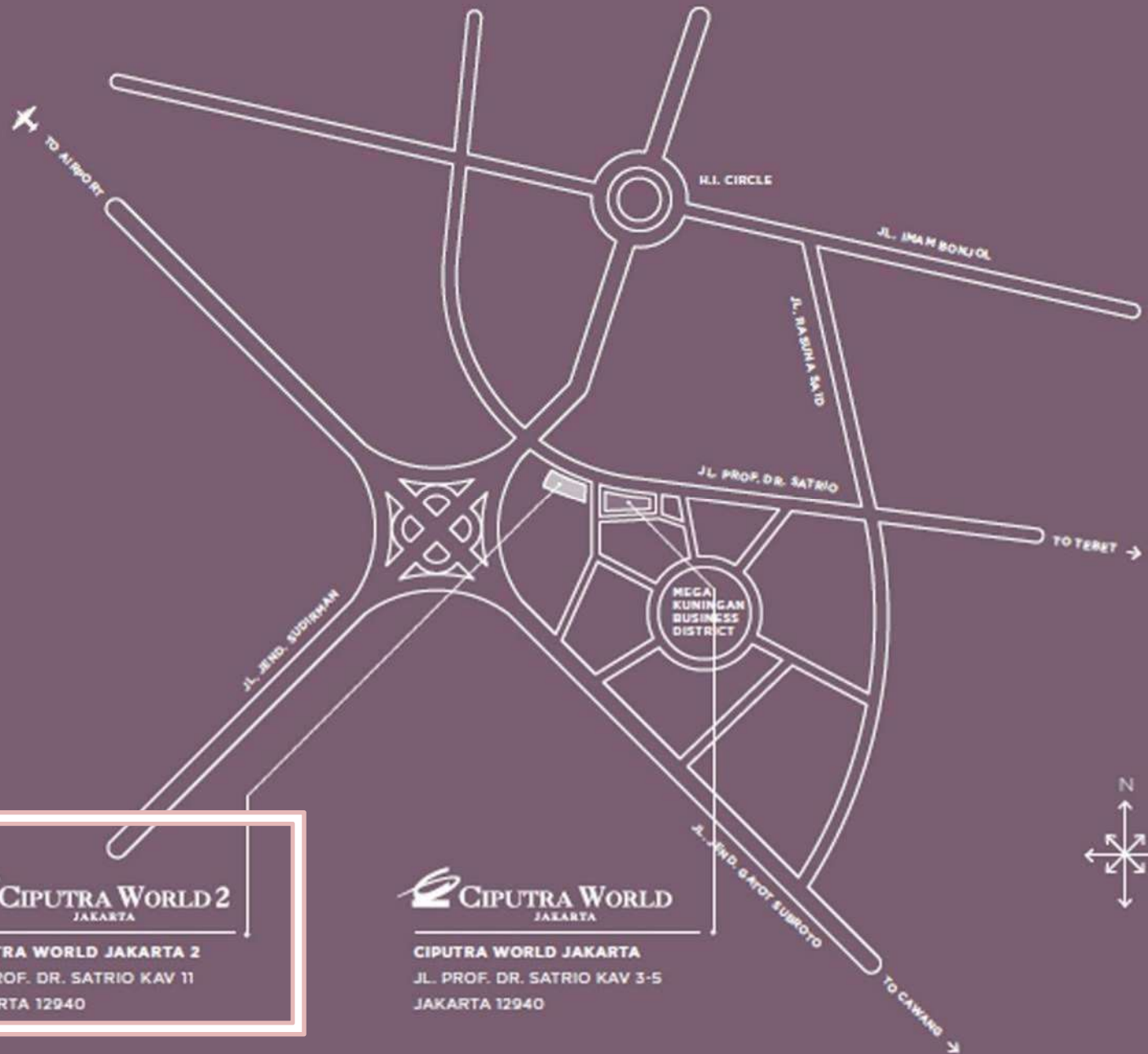
7,000m2 Green Area*

The NEWTON

**Coming Soon New Tower :
The NEWTON 2**

*disclaimer

LOCATION



 **CIPUTRA WORLD 2**
JAKARTA

CIPUTRA WORLD JAKARTA 2
JL. PROF. DR. Satrio KAV 11
JAKARTA 12940

 **CIPUTRA WORLD**
JAKARTA

CIPUTRA WORLD JAKARTA
JL. PROF. DR. Satrio KAV 3-5
JAKARTA 12940

LIVE THE
DREAM,
LIFE WITH
EXCELLENCE

I N T R O D U C I N G

THE
NEWTON
AT CIPUTRA WORLD 2 JAKARTA







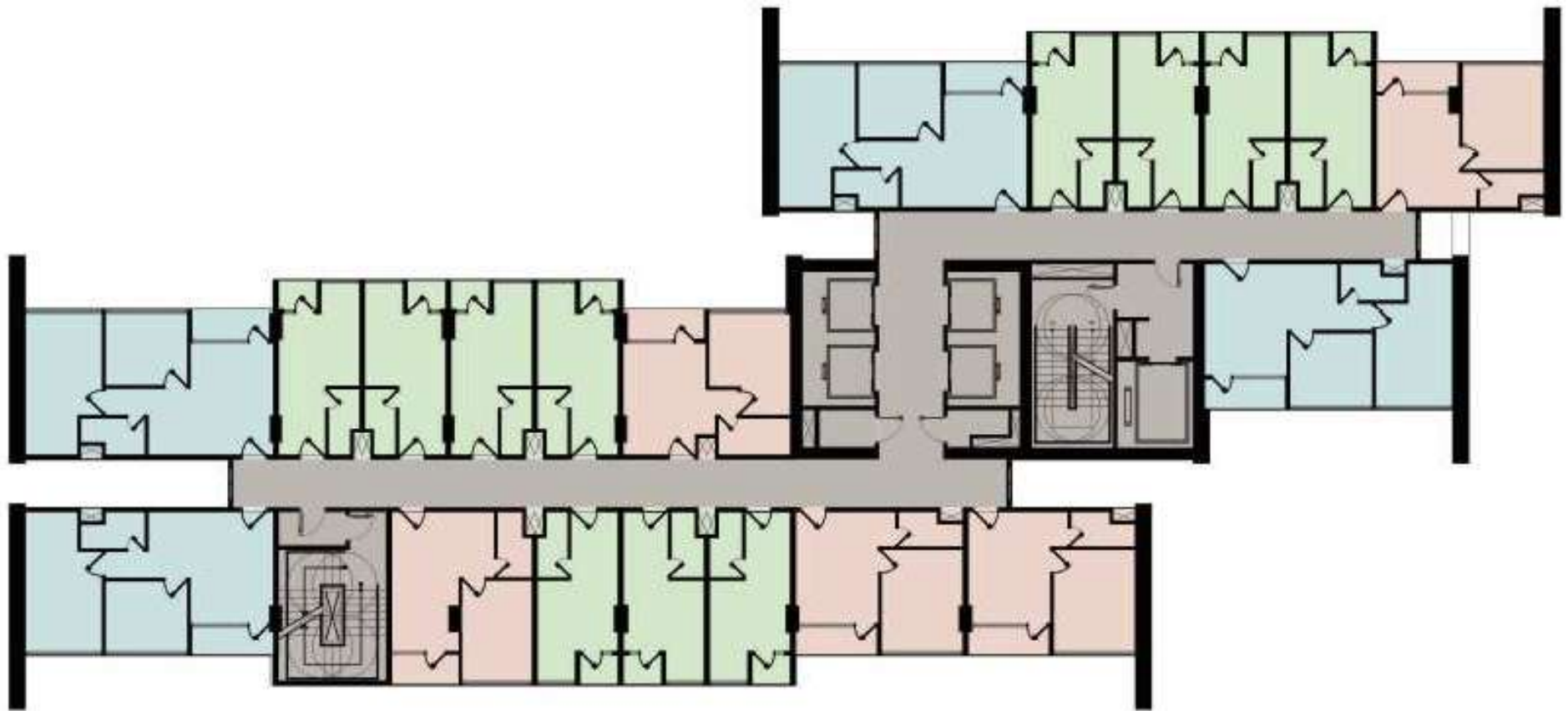
THE
NEWTON



THE NEWTON 2

AT CIPUTRA WORLD 2 JAKARTA





KOMPOSISI UNIT / LANTAI

STUDIO	11 UNIT
ONE BED ROOM	5 UNIT
TWO BED ROOM	4 UNIT
TOTAL	20 UNIT

Lt 8-21, 23-40



KOMPOSISI UNIT / LANTAI

STUDIO	11 UNIT
ONE BED ROOM	5 UNIT
TWO BED ROOM	4 UNIT
TOTAL	20 UNIT

Lt 8-21, 23-40

On design progress



Description :

- 624 Total Unit
- Studio (51%) - 24 Sqm
- 1 bedroom (28%) – 41 sqm
- 2 Bedroom (21%) - 61 sqm
- P1-P6 (5 floor) podium parking
- P7 Facility
- 4 passenger lift + 1 service lift

Payment Term :

Down Payment - 20% + 32 x instalment

NUP Rp. 10.000.000
(sepuluh juta rupiah)

No Rekening :

BCA PT. Ciputra Adibuana (CAB)

Atas Nama : PT. Ciputra Adibuana

No Rekening : 5020.3020.13

Bank BCA Cab. Graha Paramita

THANK YOU

www.Propertindo123.com
Leading Startup in Property Technology

Disclaimer:

While all reasonable care has been taken in this presentation, the developer shall not be held responsible for any inaccuracies or omissions. All statements are believed to be correct but shall not be regarded as statements or representations of fact. Visual representations including models, drawings, illustrations, photograph, and art rendering portray artistic impressions only and not to be taken as representations of fact. This presentation is not an offering letter but simply acts as a material for discussion only.