



Welcome to Country Garden BSD

www.Propertindo123.com
Leading Startup in Property Technology



No.1
IN THE
WORLD
★★★★★

Who is Country Garden?

43 BILLION USD
SALES IN 2016

21.7 BILLION USD
SALES IN Q1 2016

3 MILLIONS
HOME OWNERS

300 FORBES
TOP COMPANY

500 TOP FORTUNE
GLOBAL

SOLD ACHIEVED
421.7 BILLIONS
US\$

39 MILLION USD
DONATION

TOP 3 CHINA PROPERTY
DEVELOPER

100,000+
EMPLOYEES

70 HIGH QUALITY
PROJECT

2007 LISTED HK
STOCK EXCHANGE

#183 BRAND FINANCE
GLOBAL 500 2017

51 SCHOOLS
WITH 30,000 STUDENTS

68 HOTELS
PHOENIX HOTEL

#44 BRAND TOP 50 MOST
VALUABLE CHINESE
BRANDS 2017

Worldwide Land Bank

Country Garden actively expands its presence globally in 10 different countries, such as United States, United Kingdom, Australia, New Zealand, Thailand, India, Vietnam, Philippines, Malaysia, and Indonesia. Besides projects in China, we also have overseas projects in 4 countries, including India, Australia, Malaysia, and Indonesia.



Our Successful Projects



DIAMOND CITY, 2013, MALAYSIA



RYDE GARDEN, 2015, AUSTRALIA

Global Footprint
Expand the business globally to United States, United Kingdom, Australia, Vietnam, Singapore, Malaysia, Thailand, Indonesia, etc.
5 overseas projects accumulatively contribute US\$ 7 Million in sales.



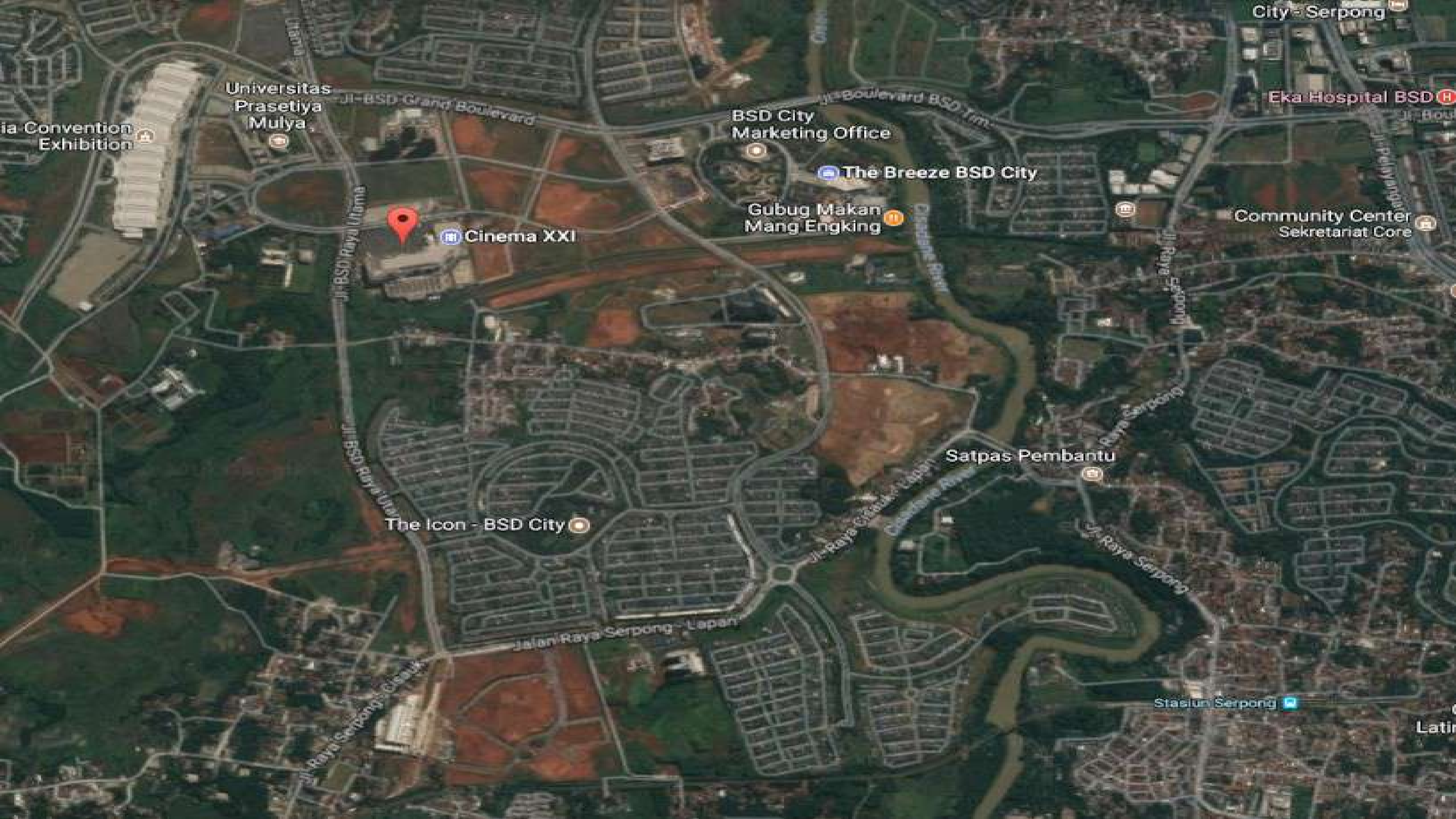
FOREST CITY, 2015, MALAYSIA



DANGA BAY, 2013, MALAYSIA



Redefine Urban Living



City - Serpong

Eka Hospital BSD

Universitas
Prasetya
Mulya

Jl. BSD Grand Boulevard

BSD City
Marketing Office

The Breeze BSD City

Gubug Makan
Mang Engking

Cinema XXI

Community Center
Sekretariat Core

The Icon - BSD City

Satpas Pembantu

Stasiun Serpong

Jalan Raya Serpong Lapan

Jl. Raya Serpong Lapan

Jl. Raya Serpong

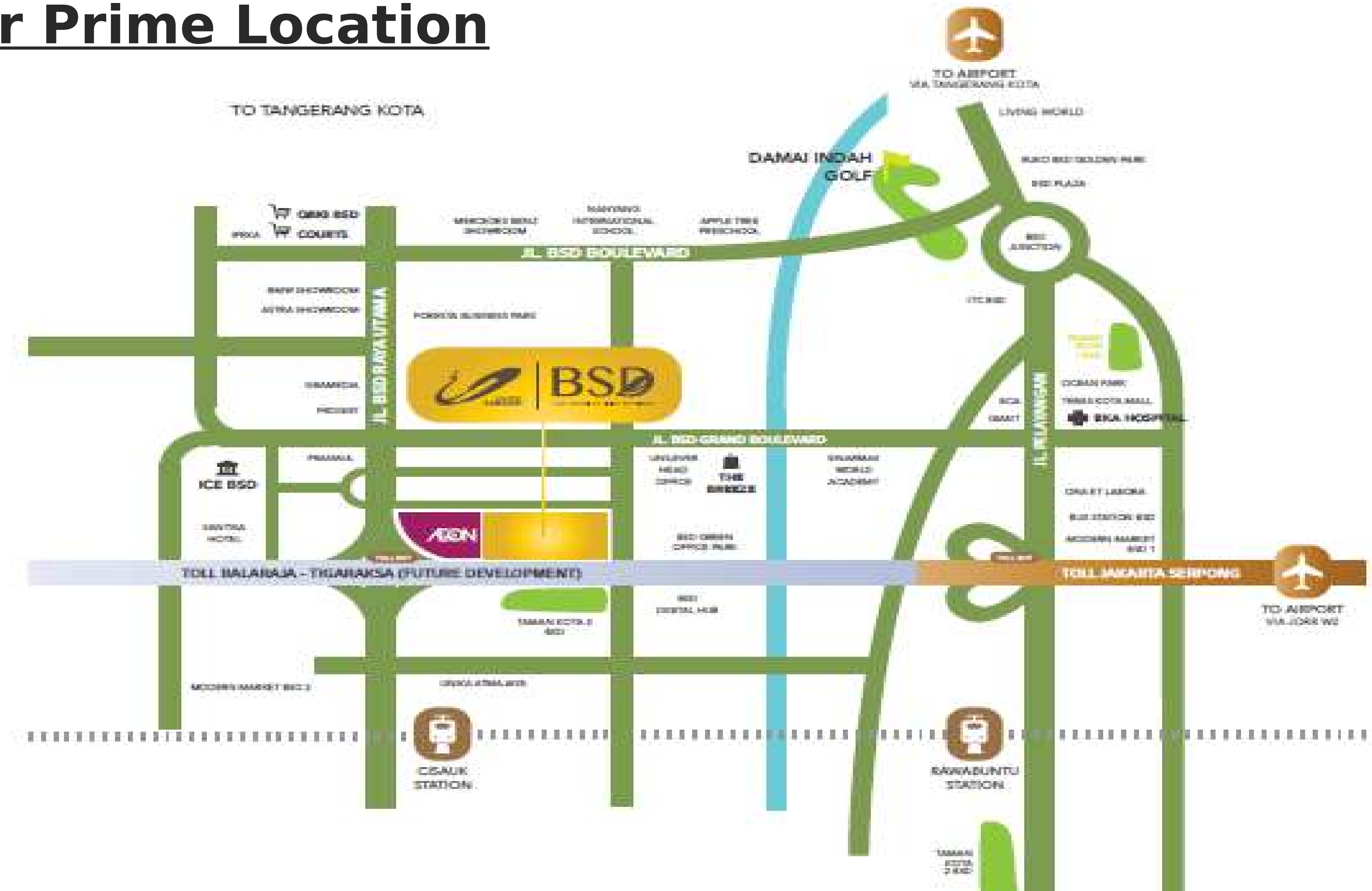
Jl. Raya Serpong Cileauk

Jl. BSD Raya Utama

Jl. Raya Serpong

Latin

Our Prime Location



Master Plan



Our Project's Surrounding

SHOPPING MALLS	     
OFFICE BUILDING	     
WORLD CLASS EDUCATION	         
HOSPITAL	    
DIGITAL HUB	      
EXHIBITION CENTER	

Our Facilities

- Drinkable Water Fountain in public area
- International Standard Jogging Track
- 4.3 ha 7 Layer Garden & Sky Garden
- 24 Hours Security System + CCTV
- Free Wi-fi in all Public Area
- High Tech Parking System
- Indoor & Outdoor Gym
- Children Playground
- Basket Ball Court
- Shopping Arcade
- Bicycle Track
- Bicycle Sharing
- Tennis Court
- Soccer Field
- Swimming Pool



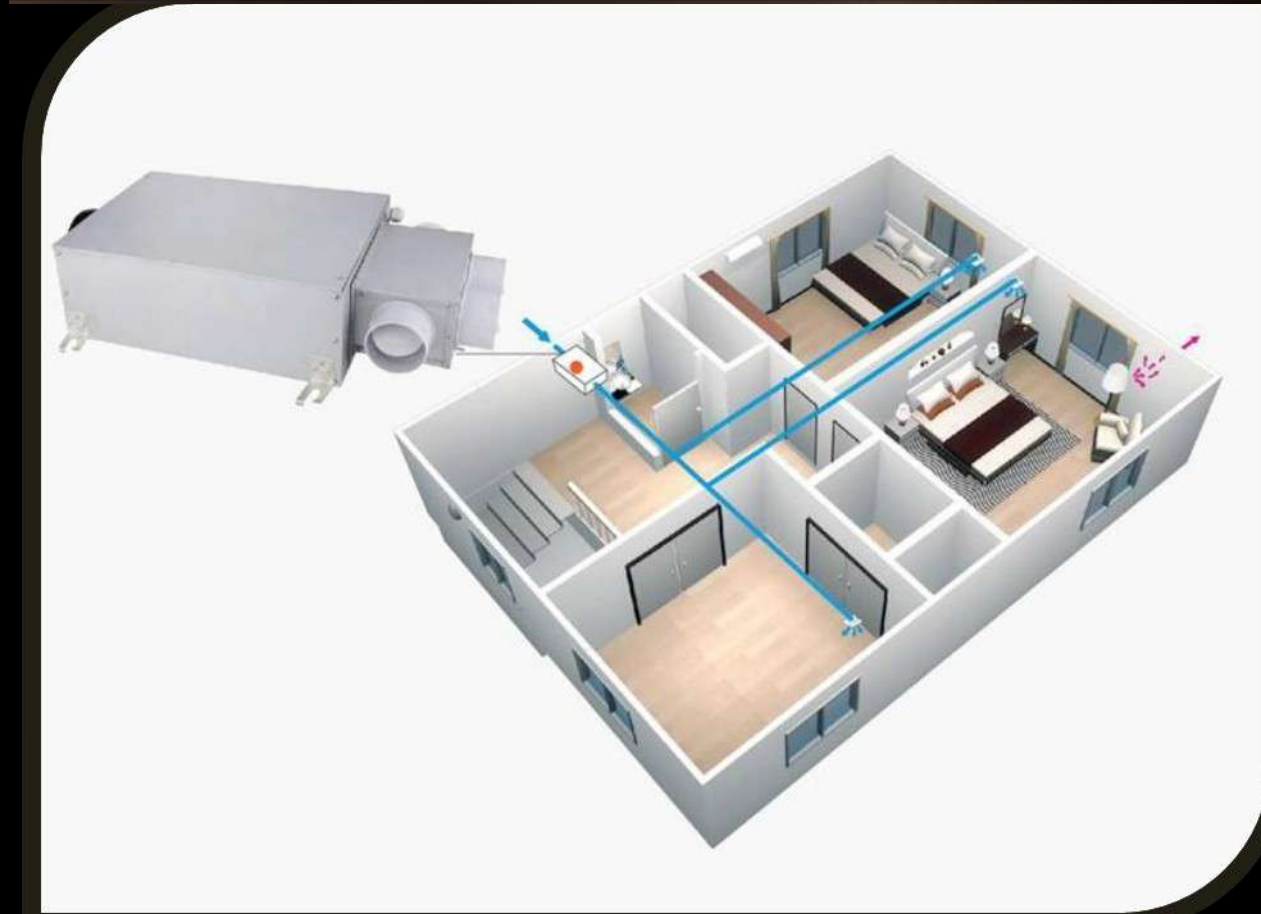
First Class

All Connected to your Smart Phone with only 1 Apps

- **4 in 1 Door Lock System (Fingerprint, Password, Card Access, Key)**
- **Motion Sensor Detector**
- **Windows Alarm System**

Additional Unit Facilities

- **Air Purifier**
- **Video Intercom**



When Luxury Becomes Personal

UNIT SPECIFICATION

Floor	Living and Dining, Kitchen, Bathrooms Bedrooms Service Area, Maid area and Maid Bathrooms (if any)	Homogeneous Tile Laminated Parquet Homogeneous Tile
Ceiling	Living and Dining, Kitchen, Bedrooms, Service and Maid Area Bathrooms, Maid Bathrooms	Painted Gypsumboard Painted Calciboard
Wall	Living and Dining, Bedrooms Bathrooms Kitchen Service and Maid Area Maid Bathroom	Painted Marble + Painted Granite Backsplash + Painted Painted Ceramic Tile
Door	Main Door Bedrooms, Bathrooms, Service and Maid Area	Engineered Wood Door Veneered Engineered Doors
Kitchen	Appliances Counter Top Surface Kitchen Sink	Kitchen Hood and Gas Stove provided Granite Provided
Sanitary	Bathrooms, Kitchen, Service and Maid Area	Toto or equal
Air Conditioning	Living, Dining and Each bedroom (excluding Maid Bedroom)	Multi Split Wall
Wardrobe	Provided	
Vanity	Master Bathroom Provide	

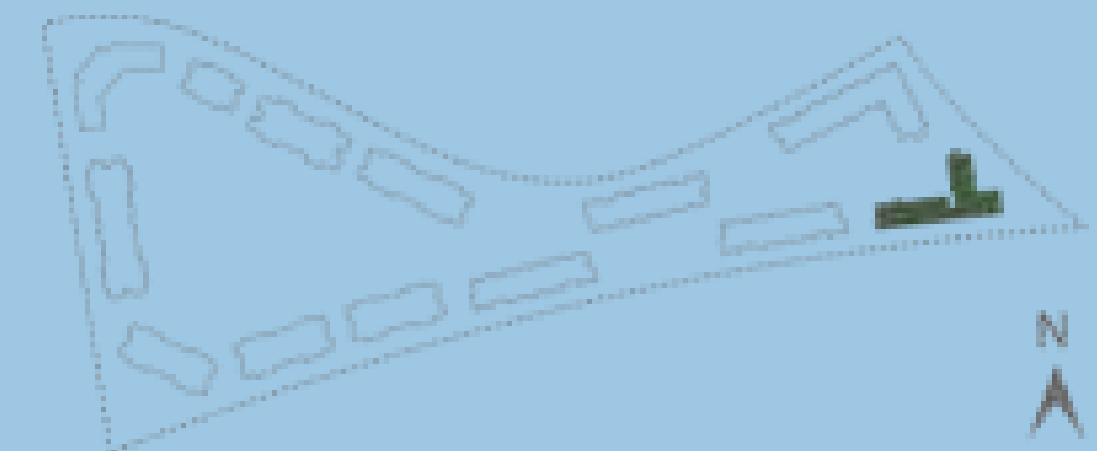
MEET THE NEEDS OF YOUNG PEOPLE

FULLY FURNISHED



A
STUDIO
20.87m²

- **Proportionally Layout Apartment**
- **Wide Windows with Full Open Vision & Views**
- **Nicely Decorated Interior**
- **Ergonomic Arrangement of Furniture Designs**
- **Comfortable Private Bedroom with Working Desk**
- **Clean Bathroom with Fresh Shower**
- **Tasteful Dining Area**
- **Kitchen with Modern Appliances**



YOUNG COUPLE

ENJOY PERSONALIZED LIFE



B
2-BEDROOM
47.14m

- **Proportionally Layout Apartment**
- **Wide Windows with Full Open Vision & Views**
- **Nicely Decorated Interior**
- **Ergonomic Arrangement of Furniture Designs**
- **Luxurious Living Room**
- **Comfortable Private Bedroom with Working Desk**
- **Clean Bathroom with Fresh Shower**
- **Tasteful Dining Area**
- **Kitchen with Modern Appliances**



TWO-CHILD FAMILY

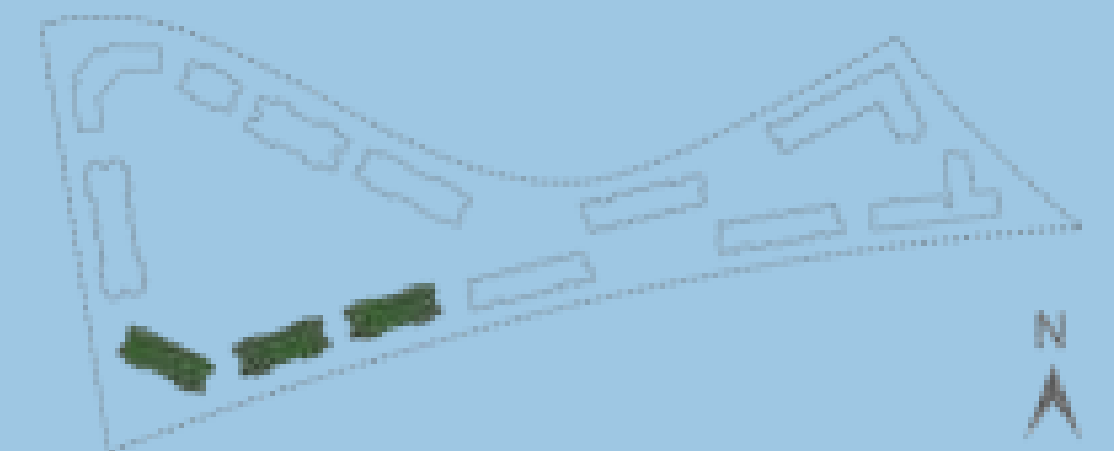
C

3-BEDROOM

64.67m



- Proportionally Layout Apartment
- Wide Windows with Full Open Vision & Views
- Nicely Decorated Interior
- Ergonomic Arrangement of Furniture Designs
- Luxurious Living Room
- Comfortable Private Bedroom with Working Desk
- Clean Bathroom with Fresh Shower
- Tasteful Dining Area
- Kitchen with Modern Appliances



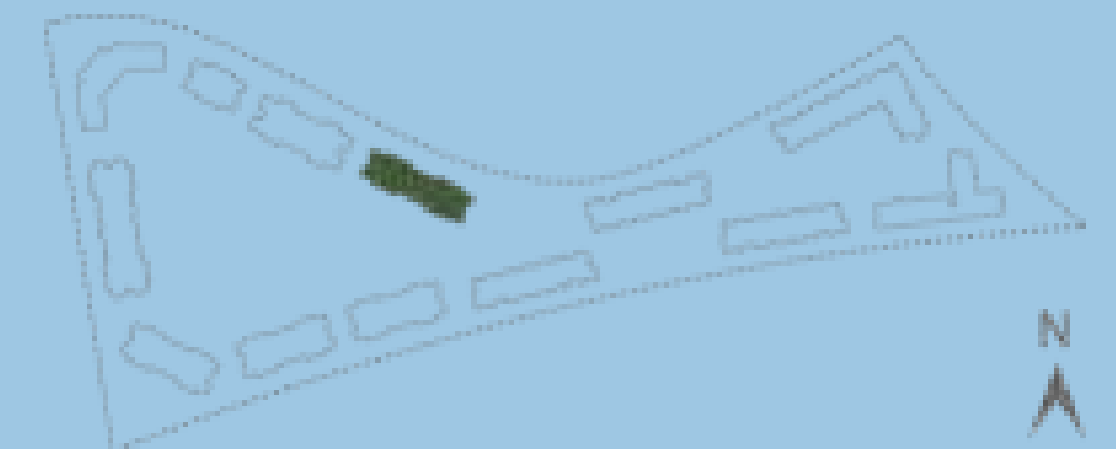
A SANCTUARY OF EXQUISITE EXTRAVAGANZA



D

3-BEDROOM + 1 MAID ROOM
85.00m

- Proportionally Layout Apartment
- Wide Windows with Full Open Vision & Views
- Nicely Decorated Interior
- Ergonomic Arrangement of Furniture Designs
- Luxurious Living Room
- Spacious Master Bedroom with Ensuite Bathroom
- Comfortable Private Bedroom with Working Desk
- Clean Bathroom with Fresh Shower
- Tasteful Dining Area
- Service Area for Maid Room



BIG FAMILY

PERFECT SPACE FOR YOUR FAMILY

E

3-BEDROOM + 1 MAID ROOM

112.26m

- Proportionally Layout Apartment
- Wide Windows with Full Open Vision & Views
- Nicely Decorated Interior
- Ergonomic Arrangement of Furniture Designs
- Luxurious Living Room
- Spacious Master Bedroom with Ensuite Bathroom
- Comfortable Private Bedroom with Working Desk
- Clean Bathroom with Fresh Shower
- Tasteful Dining Area
- Service Area for Maid Room

